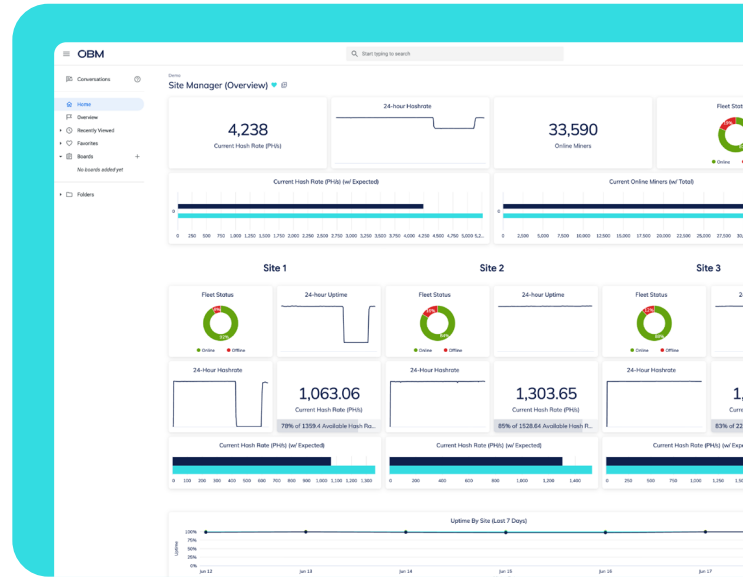


## Foreman Intelligence

**Portfolio analytics built for leadership.  
No data analyst required.**

Running a Bitcoin mining operation at scale means managing thousands of assets, dozens of data streams, and a market that moves fast. Most organizations are doing it with spreadsheets and an overworked analyst.

Foreman Intelligence, an advanced analytics platform, combines Foreman's miner management data and real-time inputs, e.g. LMP prices, hash price, and market data, delivering a unified view across all sites. Powerful yet intuitive, it enables more effective fleet management, reducing costs and boosting profits.



### FOR FINANCE

Cost-per-coin, power cost variance, curtailment P&L, and hardware efficiency trending, on demand and audit-ready.

### FOR OPERATIONS

Hash rate, uptime, fleet status, and cross-site failure patterns rolled up consistently across every site, in one view.

### FOR EXECUTIVES

Portfolio-level profitability, revenue, and net income in a single executive view, built for leadership conversations, not operator workflows.

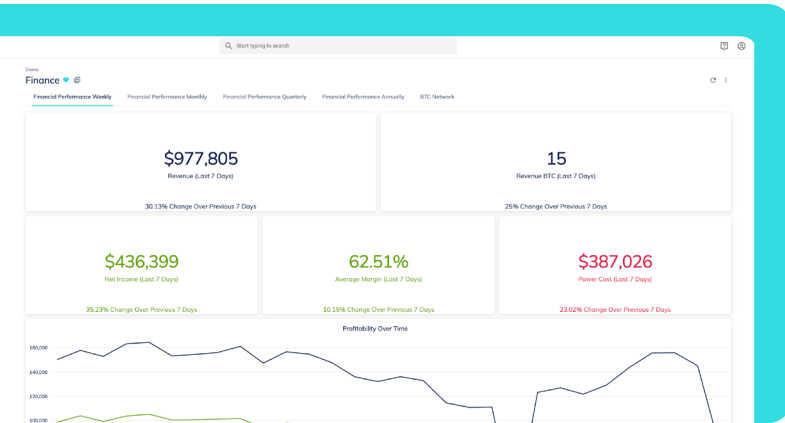
### WHAT FOREMAN INTELLIGENCE DELIVERS

- ✓ **Real-Time View Across all Sites**  
Cross-site reporting with consistent metrics across the entire fleet. No manual aggregation or reconciliation.
- ✓ **Out-of-the Box Reports**  
Pre-built dashboards covering revenue, margin, power cost, curtailment P&L, hash rate, and fleet efficiency, no setup required.
- ✓ **Self-Serve Access**  
Finance and operations leaders pull their own numbers, on demand, without opening a ticket with IT or waiting on another department.
- ✓ **External Context Built In**  
Fleet performance is automatically set against LMP prices, hash price, and weather data, so leaders know whether results reflect execution or market conditions.
- ✓ **In-App AI Agent**  
Ask fleet questions in plain language and get immediate, data-grounded answers. No SQL. No dashboard navigation. No analyst required.
- ✓ **Easy-to-Build Custom Reports**  
Built with Google's Looker Studio, Foreman Intelligence gives your team the tools to build custom reports against your fleet data without writing code.

## Finance & Executive View

**Control costs. Report real numbers. Own the conversation.**

Finance leaders in Bitcoin mining are often the last to see the data and the first to answer for the variance. Foreman Intelligence gives Finance the data infrastructure to close that gap, with out-of-the-box dashboards, always-on reporting, and full data lineage from source to board deck.



### Key Finance Dashboard Metrics

- ✔ Revenue & Net Income
- ✔ Average Margin
- ✔ Power Cost
- ✔ Profitability Over Time
- ✔ Bitcoin Market Data
- ✔ Curtailment P&L

### Audit-ready by design.

Operational and financial data with full lineage, traceable to the source. Ready for board scrutiny, external audit, and the diligence that comes with institutional fundraising, without assembling it from spreadsheets after the fact.

### OTHER EASILY-BUILT REPORTS

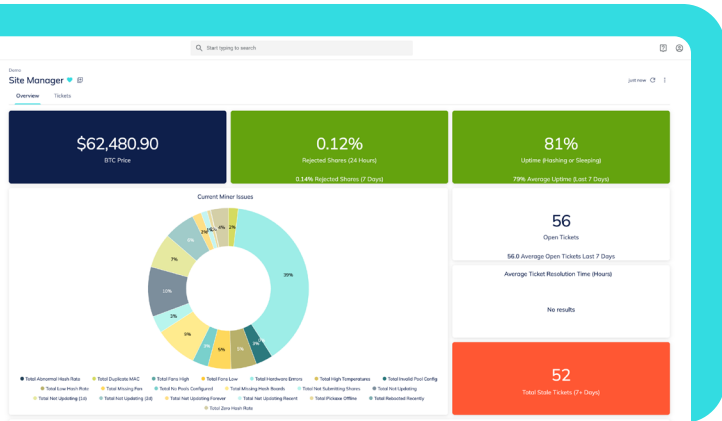
Foreman Intelligence allows for easy creation of reports that are important to your business.

- ✔ **Unit Economics Dashboard**  
Capture true cost-per-coin and cost-per-TH by site and across the portfolio, combining power consumption, applicable rates, and hash rate output in one place.
- ✔ **Power Cost Variance Analysis**  
Breakdown power cost overruns by rate, consumption, and curtailment events, so you can explain the variance to leadership with specifics rather than estimates.
- ✔ **Curtailment P&L Accounting**  
Capture both sides of every curtailment event: demand response revenue earned and mining revenue foregone, with the net economics for every event and the program overall.
- ✔ **Hardware Efficiency Trending**  
Track efficiency degradation by hardware cohort over time, giving Finance an independent foundation for depreciation modeling and a data-backed basis for capex conversations.
- ✔ **Cross-Site Performance**  
Standardized KPIs across every site, consistently defined and calculated, so board and investor reports are built from a single source rather than assembled from multiple exports.
- ✔ **Executives & Investors**  
Portfolio-level profitability, revenue, and net income in a single executive view, built for leadership conversations, not operator workflows.

# Site Managers & Operators

Every site. Every signal. One view.

Foreman Intelligence gives multi-site operations leaders a real fleet-wide view: uptime, efficiency, and cost rolled up consistently across sites, with alerts that surface problems before they compound and market context that tells you whether performance reflects execution or conditions.



## Key Metrics include:

- ✔ Hash Rate
- ✔ Fleet Status
- ✔ Profitability Over Time
- ✔ 24-Hour Uptime
- ✔ Curtailment Performance
- ✔ Performance in Market Context

## Stop running ops on last week's data.

Proactive alerts and continuous external context, including LMP prices, hash price, and weather, surface problems and opportunities before the weekly review. The 94% uptime during off-peak hours and the 94% uptime during a price spike are not the same outcome. Foreman Intelligence tells the difference.

## OTHER EASILY-BUILT REPORTS

Foreman Intelligence allows for easy creation of reports that are important to your business.

### ✔ Repair-to-Performance Analytics

Join ticket history with asset performance data to surface the cost of downtime by cause, identify hardware with high lifetime repair costs, and flag when a machine has crossed the threshold where replacement beats continued repair.

### ✔ Cross-Site Failure Detection

Aggregate ticket data across the entire fleet to surface hardware and firmware failure patterns that are invisible at the site level. What looks like random bad luck at one site reveals itself as a systematic problem when you can see all your sites at once.

### ✔ Inventory Demand Modeling

Map parts consumption against fleet composition and actual failure rates to right-size inventory at each site, reducing capital tied up in slow-moving parts while keeping high-failure components in stock.

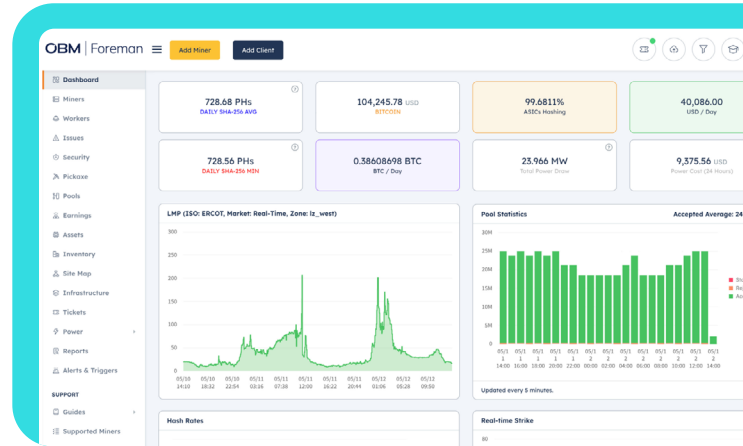
### ✔ Threshold Alerts

Configure notifications that fire when key metrics cross defined thresholds, so uptime drops, power anomalies, and curtailment misses reach operations leaders before the next scheduled report.

## Adaptive cruise control for your mine.

Foreman is the industry-leading bitcoin mine management software, enabling miners to remotely manage their sites from anywhere. Foreman empowers mining operators with the automation, insights, and precision they need to optimize efficiency, maximize profitability, and reduce operational risk.

**Trusted by more than 10,000 customers,** Foreman enables miners to unlock energy agility, simplify operations, and grow with confidence.



### ESSENTIAL FEATURES

Included with all Foreman subscriptions

- ✓ **Real-Time Monitoring & Insights** – Track hash rates, miner status, and earnings in a customizable dashboard
- ✓ **Alerts & Triggers** – Detect issues in real-time and automate fixes to minimize downtime
- ✓ **Power Controls** – Manage energy usage to enhance performance and reduce operational costs
- ✓ **Bulk Miner Management** – Apply configuration changes across thousands of miners instantly

### PREMIUM FEATURES

Available as add-ons

- ✓ **Advanced Power Management** – Hands-free, automated energy management with price response, time-of-use scheduling, and demand response integration
- ✓ **Asset & Inventory Management** – Real-time visibility, proactive maintenance alerts, and integrated ticket management
- ✓ **Foreman Intelligence** – Advanced analytics platform for Bitcoin miners at scale
- ✓ **Security & Compliance** – Access SOC 1 and SOC 2 reports, Bridge Letters, and ISO 27001 certification through the Foreman Trust Center
- ✓ **Managed Network Services** – Custom solutions, expert audits, and hands-free setup & support

### ABOUT OBM

OBM is a leader in flexible load management solutions. We provide energy agility, operational simplicity and risk mitigation through our innovative compute management platform, comprehensive energy optimization technology, and broad energy partnerships. With a proven track record of managing loads over 500 MW and integrating them into leading demand response programs nationwide, as well as mitigating operational and financial risk, OBM is transforming the landscape of compute-intensive operations.