

# OBM | Foreman

## Advanced Power Management

### Dynamic energy agility for your mining operation.

Advanced Power Management provides hands-free energy optimization for operations of any size and market—whether operating in regulated or deregulated markets.

The screenshot displays the 'Power Controls History' section of the Foreman interface. At the top, it shows '6876 / 6898 Available Miners (Power Control)' and '23,966 MW TOTAL POWER DRAW'. Below this are tabs for 'POWER CONTROLS', 'DISPATCHES', 'COMMITMENTS', 'HISTORY', and 'AUTOMATION'. The 'HISTORY' tab is active, showing a table of power control events.

Name	Reason	Date	Direction	Control Target
auto-curtailment	Strike	Apr 29, 2025, 1:01 p.m. UTC	Power Up	All Target
auto-curtailment	Strike	Apr 29, 2025, 12:54 p.m. UTC	Power Up	All Target
auto-curtailment	Strike	Apr 29, 2025, 12:51 p.m. UTC	Power Up	All Target
auto-curtailment	Strike	Apr 29, 2025, 12:51 p.m. UTC	Power Down	All Target
auto-curtailment	Strike	Apr 29, 2025, 12:46 p.m. UTC	Power Up	All Target
auto-curtailment	Strike	Apr 29, 2025, 12:46 p.m. UTC	Power Down	All Target
auto-curtailment	Strike	Apr 29, 2025, 12:43 p.m. UTC	Power Down	All Target

TRUSTED BY  
**10,000+**  
Customers

Managing a mining operation is high stakes. Even small performance dips can result in significant cost increases. Maximize the value of your mining investment with Foreman's Advanced Power Management premium feature.

### PRICE RESPONSE PLUS

Maximize profitability at every price point in dynamic pricing markets. Let Foreman calculate model-specific strike prices in real-time or define your own. Three curtailment strategies allow you to apply the best strategy to each of your miners based on each miner's hardware and firmware.

- ✓ **Basic** – Delivers reliable on/off control when strike price thresholds are met to avoid high costs
- ✓ **Power Mode** – Adds discrete states to underclock or overclock your mines to generative savings or capitalize on lower energy costs
- ✓ **Wattage Target** – Enables granular, wattage-level precision to capture profit at price points that simpler strategies miss entirely

### ADAPTIVE DISPATCHES

Flexible, automatic curtailment options that deliver maximum profit per MW while protecting critical infrastructure.

- ✓ **Active Curtailment Monitoring** – Ensure that curtailed miners stay down for the duration of a dispatch
- ✓ **Set Point Dispatches** – Keep your power draw below your allowed target
- ✓ **Buffered Dispatches** – Maximize your use of behind-the-meter power generation (solar, wind, gas flare, etc.)
- ✓ **Recurring Schedules** – Schedule curtailments to perform when needed without all the stress
- ✓ **Execution Sequences** – Mine only your most profitable miners when you curtail part of your load

### PARTNER INTEGRATIONS

Capture additional revenue streams and reduce costs by integrating with your power partner to automate the execution of your power strategy with programs like Demand Response, Peak Avoidance, and more.

- ✓ **Third-Party Integration** – Out-of-the-box integrations with leading QSEs, CSPs, local utilities, and co-ops
- ✓ **Earn Revenue or Savings** – Get paid for curtailment in deregulated markets or secure lower energy rates in regulated areas. Foreman supports leading Demand Response, Peak Response and other programs
- ✓ **Automatic Participation** – Aggregators such as Voltus, CPower, and GridBeyond manage the process so you can stay focused on daily operations

# Adaptive Dispatches

**Flexible, automatic curtailment that delivers maximum profit per MW while protecting critical infrastructure.**

Adaptive Dispatches gives you precise, automated control for any power scenario—behind-the-meter generation, time-of-use obligations, or utility load commitments.



## KEY FEATURES

- ✓ **Active Curtailment Monitoring:** Ensure that curtailed miners stay down for the duration of a dispatch
- ✓ **Set Point Dispatches:** Keep your power draw below your allowed target
- ✓ **Buffered Dispatches:** Maximize your use of behind-the-meter power generation (solar, wind, gas flare, etc.)
- ✓ **Recurring Schedules:** Schedule curtailments to perform when needed without all the stress
- ✓ **Execution Sequences:** Mine only your most profitable miners when you curtail part of your load
- ✓ **Infrastructure-Controlled Dispatches:** Integrate with Modbus devices such as gas pressure and flow sensors to automatically control curtailments while avoiding unnecessary wear and tear on miners

## Behind the Meter

If you exceed available supply from variable generation (e.g. wind, solar, gas flare) your entire site can trip offline for hours or days. Adaptive Dispatches automatically throttles compute as generation fluctuates, keeping operations running safely without manual monitoring. Grid-connected sites can also automate power arbitrage and participate in demand response programs to maximize returns.

**Example:** A remote operation powered by a gas flare generator automatically adjusts its fleet size as pressure fluctuates thereby avoiding tripped breakers and staying online 24/7.

## Time of Use — Price-Based

In regulated markets, energy prices can vary between peak and off-peak windows during different times of the year. Recurring Schedules automatically curtail your fleet when prices peak and bring it back online when they drop, with no operator involvement.

**Example:** A miner with high summer afternoon pricing sets a recurring weekly schedule to curtail automatically and the fleet restarts overnight without anyone touching a dashboard.

## Time of Use — Contract-Based

Miners who have negotiated discounted rates in exchange for load limits can't afford to miss a commitment even once. Automate contract compliance, keeping draw at or below the contractual ceiling every time, protecting discounts worth millions annually.

**Example:** A miner with a summer load-limit agreement automatically stays below their contracted threshold and never risks the loss of their negotiated rate.

# Price Response Plus

**Stop leaving money on the table.  
Maximize profitability at every price point.**

Most operations in a variable market can't keep up with dynamic pricing changes and often set a flat strike price. The result is not just inefficiency; it's lost profit opportunity. Price Response Plus closes that gap.

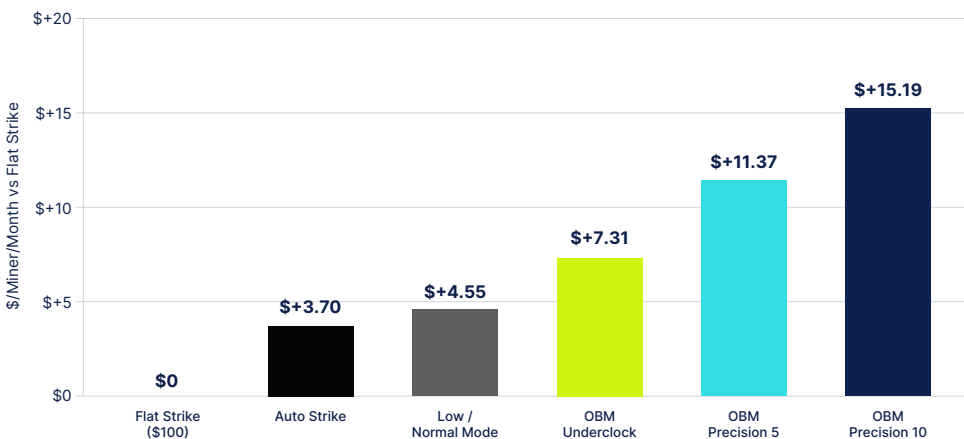


## KEY FEATURES

- ✓ **Three Automated Curtailment Strategies:** Basic (on/off), Power Mode, and Wattage Target (including overclocking or underclocking); Foreman calculates optimal strike prices per miner model in real time, factoring in power price, hash price, and network difficulty; No manual math, no spreadsheets
- ✓ **Manual Strike Controls:** Define your own strike prices or push updates via API
- ✓ **Hosting & Co-Location Support:** Independent strike prices and strategies per hosted customer
- ✓ **Ancillary Program Support:** Maintains committed load for ECRS and similar programs while curtailing the remaining fleet on strike price
- ✓ **Hardware Safety Protections:** Delay settings prevent rapid power cycling; emergency shutdown triggers instantly on abnormal price spikes
- ✓ **Broad Market & Hardware Support:** Market-leading LMP node coverage; supports Bitmain (stock, Vnish, Braiins OS, and LuxOS), Whatsminer, Avalon and more

## THE REVENUE OPPORTUNITY – FLAT STRIKE PRICE EXAMPLE

Every miner running a flat strike price is leaving margin unrealized. OBM's back tested simulation data shows how much (real ERCOT West Load Zone pricing, 2023–2025).



A 500-machine operation running Wattage Target vs. a flat strike generates \$7,600/month in additional profit—over \$91,000/year.

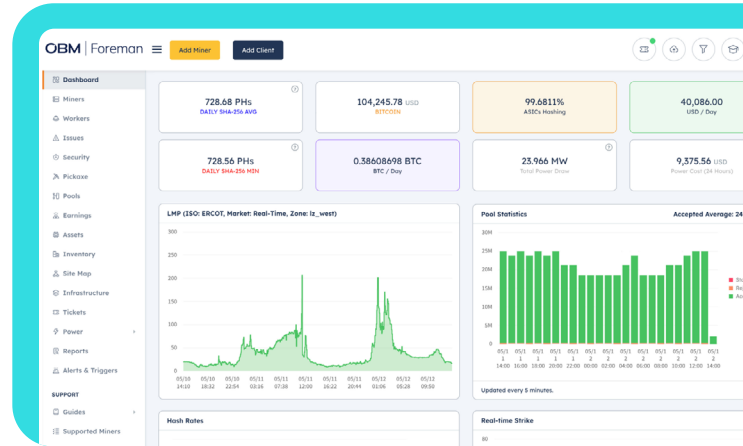
**At 1,000 machines:  
\$182,000+ annually.**

Simulation based on S19j Pro, ERCOT West Load Zone real-time pricing, 2023–2025. Constant temperature assumed; wear and tear not factored.

## Adaptive cruise control for your mine.

Foreman is the industry-leading bitcoin mine management software, enabling miners to remotely manage their sites from anywhere. Foreman empowers mining operators with the automation, insights, and precision they need to optimize efficiency, maximize profitability, and reduce operational risk.

**Trusted by more than 10,000 customers,** Foreman enables miners to unlock energy agility, simplify operations, and grow with confidence.



### ESSENTIAL FEATURES

Included with all Foreman subscriptions

- ✓ **Real-Time Monitoring & Insights** – Track hash rates, miner status, and earnings in a customizable dashboard
- ✓ **Alerts & Triggers** – Detect issues in real-time and automate fixes to minimize downtime
- ✓ **Power Controls** – Manage energy usage to enhance performance and reduce operational costs
- ✓ **Bulk Miner Management** – Apply configuration changes across thousands of miners instantly

### PREMIUM FEATURES

Available as add-ons

- ✓ **Advanced Power Management** – Hands-free, automated energy management with price response, time-of-use scheduling, and demand response integration
- ✓ **Asset & Inventory Management** – Real-time visibility, proactive maintenance alerts, and integrated ticket management
- ✓ **Data & Reporting** – In-depth analytics, direct access to BigQuery datasets, and custom reporting tools
- ✓ **Security & Compliance** – Access SOC 1 and SOC 2 reports, Bridge Letters, and ISO 27001 certification through the Foreman Trust Center
- ✓ **Managed Network Services** – Custom solutions, expert audits, and hands-free setup & support

### ABOUT OBM

OBM is a leader in flexible load management solutions. We provide energy agility, operational simplicity and risk mitigation through our innovative compute management platform, comprehensive energy optimization technology, and broad energy partnerships. With a proven track record of managing loads over 500 MW and integrating them into leading demand response programs nationwide, as well as mitigating operational and financial risk, OBM is transforming the landscape of compute-intensive operations.