

**Manage your Mine,  
Optimize Operations,  
Boost Profits  
with Foreman**

# Table of Contents

---

## 3 Foreman Overview

---

### Premium Features & Services:

## 5 Advanced Power Management

---

## 6 Assets & Inventory

---

## 7 Data & Reporting

---

## 8 Security & Compliance

---

## 9 Managed Network Services

---

### ABOUT OBM

OBM is a leader in flexible load management solutions. We provide energy agility, operational simplicity and risk mitigation through our innovative compute management platform, comprehensive energy optimization technology, and broad energy partnerships. With a proven track record of managing loads up to 500 MW and integrating them into leading demand response programs nationwide, as well as mitigating operational and financial risk, OBM is transforming the landscape of compute-intensive operations.

# Manage Your Mine, Optimize Operations, Boost Profits

Foreman empowers large-scale mining operations with the automation, insights, and precision control needed to maximize efficiency and profitability. Foreman streamlines energy management, inventory tracking, network optimization, and real-time data access—eliminating manual processes and reducing operational risk.

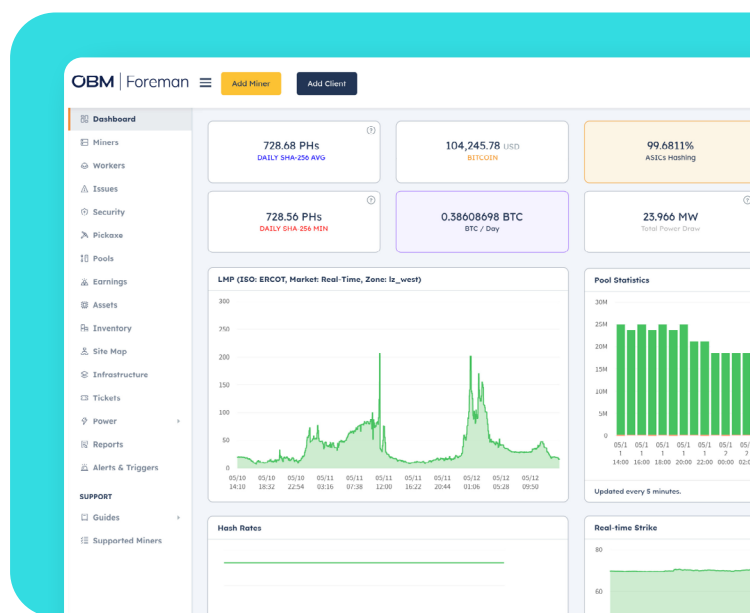


TRUSTED BY  
**10,000+**  
Customers

Foreman helps businesses stay ahead in an evolving market. We provide the tools miners need to scale with confidence, cut costs, and unlock new revenue opportunities.

## Key Features Include:

- ✓ **Alerts & Triggers**  
Detect issues in real-time and automate fixes to minimize downtime.
- ✓ **Power Controls**  
Manage energy usage to enhance performance and reduce operational costs.
- ✓ **Bulk Miner Management**  
Apply configuration changes across thousands of miners instantly.
- ✓ **Real-Time Monitoring & Insights**  
Track hash rates, miner status, and earnings in a customizable dashboard.



# Unlock More with Premium Add-ons

## **Asset & Inventory**

Keep track of miners, parts, and infrastructure with real-time visibility, proactive maintenance alerts, and integrated ticket management

---

## **Advanced Power Management**

Integrate energy management with demand response and dynamic, price-based curtailments to maximize profitability.

---

## **Managed Network Services**

Ensure seamless network performance with custom solutions, expert audits, and hands-free setup & support.

---

## **Data & Reporting**

Get in-depth analytics, direct access to BigQuery datasets, and custom reporting tools to make data-driven decisions.

---

## **Compliance & Support**

Securely access SOC 1 & SOC 2 reports through the Foreman Trust Center for streamlined audits.



# Advanced Power Management

**Foreman** provides hands-free, automated energy management for operations of any size and market—whether operating in regulated or deregulated markets.



## **PRICE RESPONSE**

Maximize profitability in dynamic pricing markets. Reduce energy costs during price fluctuations by curtailing usage based on predefined or automatically calculated machine breakeven prices.

- ✓ **Pause** – Curtail power when strike price thresholds are met to avoid high costs
- ✓ **Underclock** – Reduce energy usage during peak pricing periods to generate significant savings
- ✓ **Overclock** – Overclock your mines when prices drop to capitalize on lower energy costs

## **AUTOMATED TIME OF USE**

Automate your curtailment scheduling with building recurring dispatches to unlock on-bill savings.

- ✓ **Fixed-Rate Savings** – Commit to curtailment hours and lock in lower, predictable energy costs for easier budgeting
- ✓ **On-Bill Savings** – Access lower energy rates without waiting for checks
- ✓ **Real-Time Alerts** – Stay informed with email alerts about curtailment hours and energy usage

## **PARTNER INTEGRATIONS**

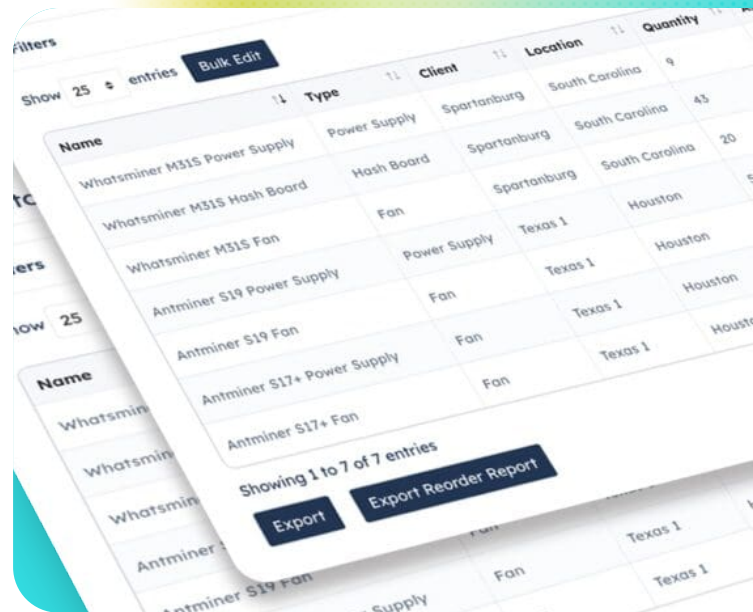
Capture additional revenue streams and reduce costs by integrating with your power partner to automate the execution of your power strategy with programs like Demand Response, Peak Avoidance, etc.

- ✓ **Third-Party Integration** – Out-of-the-box integrations with leading QSEs, CSPs, local utilities, and co-ops
- ✓ **Earn Revenue or Savings** – Get paid for curtailment in deregulated markets or secure lower energy rates in regulated areas. Foreman supports leading Demand Response, Peak Response, and other programs
- ✓ **Automatic Participation** – Aggregators such as Voltus, CPower, and GridBeyond manage the process so you can stay focused on daily operations

Advanced Power Management is available to add to your baseline Foreman subscription.

# Assets & Inventory

Efficiently manage and scale your operations while staying ahead of shortages and issues with proactive alerts. Gain visibility into your assets to improve planning and reduce downtime.



Name	Type	Client	Location	Quantity
Whatsminer M31S Power Supply	Power Supply	Spartanburg	South Carolina	9
Whatsminer M31S Hash Board	Hash Board	Spartanburg	South Carolina	45
Whatsminer M31S Fan	Fan	Spartanburg	South Carolina	20
Antminer S19 Power Supply	Power Supply	Texas 1	Houston	5
Antminer S19 Fan	Fan	Texas 1	Houston	5
Antminer S17+ Power Supply	Fan	Texas 1	Houston	5
Antminer S17+ Fan	Fan	Texas 1	Houston	5

Keep track of miners, parts, and infrastructure with proactive maintenance alerts and integrated ticket management. Centralized asset and inventory tracking helps you plan ahead, respond quickly, and minimize disruptions.

## ✓ Complete Asset Management

Track parts required for asset maintenance to ensure repairs are completed quickly and efficiently

## ✓ Integrated Ticketing

Link repair requests directly to assets for streamlined parts tracking, repair history and real-time status updates, accelerating issue resolution

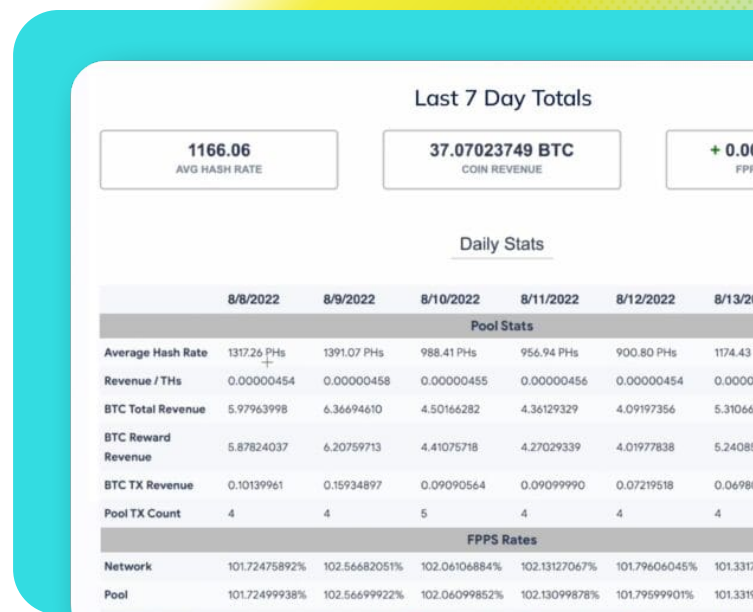
## ✓ Alerts and Triggers

Set low-inventory alerts and link them to specific assets to ensure parts are available for timely repairs reducing downtime

Assets & Inventory is available to add to your Foreman subscription.

# Data & Reporting

**Foreman** provides access to a comprehensive suite of reporting features designed to track essential performance metrics. With Data & Reporting, you can access detailed datasets and custom reporting tools, enabling in-depth analysis and decision-making.



## ✓ Tailored Miner Data in Custom Time Intervals

Access miner data at intervals that align with your needs, whether minute-by-minute, hourly, or daily

## ✓ Direct Access to Detailed Datasets

Leverage data stored in BigQuery to create custom reports, drill deeper into performance metrics, and uncover trends that drive smarter business decisions

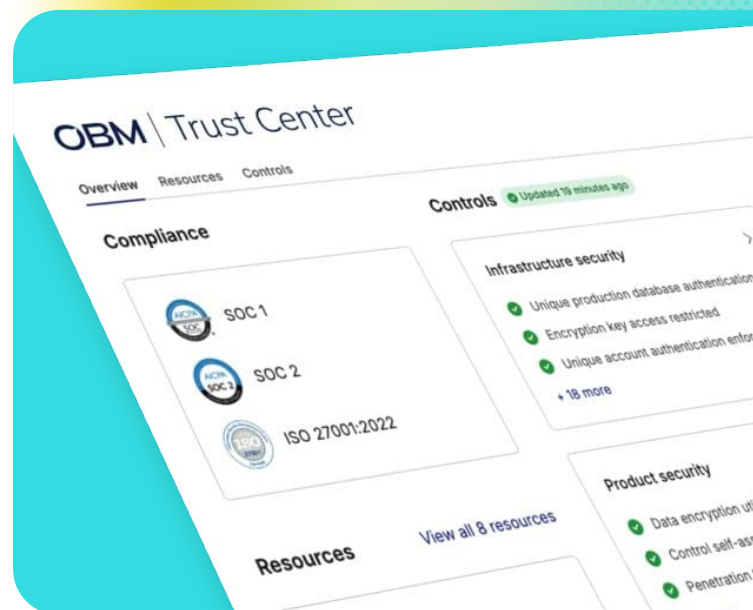
## ✓ Speed Up Mines

Build and generate reports tailored to your specific needs, giving you full flexibility in your analysis

Data & Reporting is available to add to your baseline Foreman subscription.

# Security & Compliance

**Foreman's** Trust Center offers seamless access to essential compliance documentation, including SOC 1 and SOC 2 reports, ensuring transparency and security throughout the audit process.



## ✔ Easy Access to Compliance Documents

Quickly download the latest SOC 1 and SOC 2 reports and Bridge Letters from our secure Trust Center to streamline your audit process

## ✔ Transparency & Security

Access a centralized and secure location for all compliance documentation, ensuring full transparency and security for your audit needs

## ✔ Seamless Access

Once approved, clients enjoy a full year of compliance coverage, with regular updates to ensure continuous adherence to industry standards

## ✔ Advanced Security

Manage Single Sign-On (SSO) capabilities with ease

Security & Compliance is available to add to your Foreman subscription.



# Managed Network Services

Ensure seamless network performance with tailored solutions, expert audits, pre-configured ready-to-use hardware and hands-free setup and support, provided by OBM's expert technicians.



## ✔ Customized Solutions

Customized network solutions to fit each client's unique needs, optimizing cooling and energy management at the site level for maximum efficiency

## ✔ Network Audits

Comprehensive network audits uncover opportunities to enhance performance and scale for future growth

## ✔ Seamless Setup & Support

Set low inventory alerts and link them to assets, ensuring parts are always available for timely repairs, reducing downtime

## ✔ Real-Time Visibility

Hands-free onboarding, firewall installation, and network optimization, ensure smooth and secure integration with the **Foreman** platform

Managed Network Services is available to add to your Foreman subscription.